

CUSTOMER STORY:

The University of South Carolina

"I especially like the transaction codes in the Project, Grant and Endowment Management module. We used to have two project numbers for every project, but we were able to cut that in half by using transaction codes. We're now able to track values that we could never track before!"

— Kim Elliott,
Accounting Manager
USC Foundations

The University of South Carolina is the state's largest and most comprehensive institution of higher learning. Providing significant support to all phases of the University are the five USC Foundations — the Educational Foundation, the Development Foundation, the Business Partnership Foundation, the Greater University of South Carolina Alumni Association and the Research Foundation. The goal of the Foundations is to give the University the financial security it needs to weather economic challenges and maintain its quality programs.

"We deal with over 5,000 sub-funds for the Educational and Development Foundations alone," explained USC Foundations Director of Finance Russell Meekins when asked about the complexity of the Foundations' accounting processes. "We looked at a lot of different accounting systems to help us manage these, but Blackbaud's **Financial Edge™** fit our nonprofit fund accounting needs the best. It handles all our sub-funds beautifully."

The University of South Carolina
is powered by:

► **Financial Edge™**

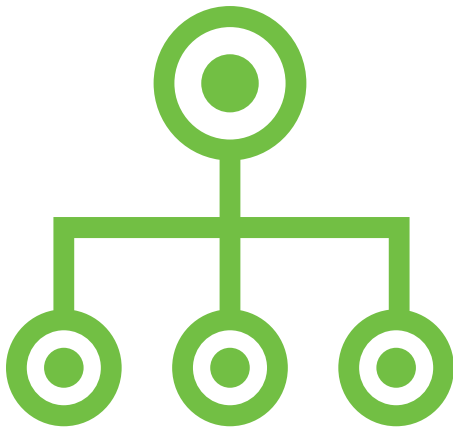
Learn More ►

Financial Edge is Blackbaud's comprehensive financial management system for nonprofit organizations. Built on thousands of suggestions from a diverse range of nonprofits, this integrated solution includes a host of special modules that will ensure your business office runs at peak efficiency.

"I especially like the transaction codes in the **Project, Grant and Endowment Management™** module," said Kim Elliott, accounting manager for USC Foundations. "We used to have two project numbers for every project, but we were able to cut that in half by using transaction codes. We're now able to track values that we could never track before!"



Using Project, Grant and Endowment Management module we can now track values that we could never track before.



Financial Edge allows a good amount of flexibility — even with the standard reports.

Elliott also emphasized that Financial Edge is simple to use for quick reporting. "The reporting works well," she said. "You're allowed a good amount of flexibility — even with the standard reports."

Blackbaud also offers consulting services and comprehensive training to help you take full advantage of your system, so you can use it in the most productive way. "Blackbaud's staff members — the consultants, support people, trainers, everyone — have all impressed us by being so responsive to our needs," Meekins continued. "We haven't been disappointed in any area by anyone we've worked with."

"We're very happy, and it's all been so easy!" Meekins said. "We welcome anyone interested in Blackbaud to call or come visit us to see the good that this system has done for the USC Foundations."

