

blackbaud™
your passion > our purpose



NetClassroom 101

**An Illustrated Cheat Sheet
for Students and Parents**

Welcome to the NetClassroom Cheat Sheet!

So what is this “NetClassroom” you speak of?

NetClassroom is an online portal for students and parents to access important school information such as assignments, grades, attendance, schedule, announcements, billing statements, transcripts, report cards, and much more. Don't worry; **NetClassroom** is secure, so you see only your own grades and information.

My school has that but calls it something else.

NetClassroom is a software program by Blackbaud, Inc., which provides technology solutions for nonprofits. Your school uses **NetClassroom**, but they can customize its name to fit their needs. When you log into the portal, the name that appears in the upper left corner is the name your school uses for **NetClassroom**.

Tips and Tricks

Contact the teacher.

To see a teacher's schedule and contact details, click his or her name. Depending on your school's settings, you may also send email to teachers from their contact pages.

No matter where you are in the portal, you can use some features to help find or navigate school information.

Show filters.

Many pages use filters so you can select the criteria of the information to view. You can use many different filters depending on the page.

Averages		Graded student work		Expand all		Collapse all	
Tri 1 grade: 89.000		Mr. Bob Wells					
Essays		93 A		25% of Tri 1			
ESSAY-1	9/9/2011	Write a letter to your classmates about the books you read on summer vacation.	21 out of 25	84%			
ESSAY-2	9/16/2011	Write a Description of an Object	24 out of 25	96%	Great improvement from the last essay. Keep improving your complete sentences and next time you'll earn an A+!		
ESSAY-3	9/23/2011	Write About an Imaginary Place	25 out of 25	100%			
ESSAY-4	9/30/2011	Write a Painting Description					
Homework		85 B		25% of Tri 1			
Tests				50% of Tri 1			

Expand and collapse.

Click to expand a row to view its detail information.
Click to collapse a row and hide its information.

Calendar.

Select to view details by day, 7 days (week), or 31 days (month), or for a specific date.

What Can I Do in NetClassroom?

Registration

View your current schedule and the course catalog. Enroll in or request classes.

Grades

Review your report card, transcript, and progress toward graduation. To see how you did on assignments, click **Graded school work**. For your overall grades, click **Averages**.

Classes

Check your class details, assignments as a list or calendar, and attendance.

Billing

View your latest student billing statement.

Conduct

See whether you have any conduct infractions.

School calendar

Review important school events and, if you want, your class and assignment information.

My settings

Edit your mailing address, set up your Home page, review Frequently Asked Questions (FAQs), and change your password and security questions.

On the Home page, you can view your latest averages, class announcements, upcoming assignments, grades, class schedule, and important school links. Some features depend on your school's settings.

Home Dora's classes ▾ Dora's grades ▾ Registration ▾ Billing ▾ Conduct ▾ School calendar ▾ My settings ▾

View ⤴

Register for classes

Check graduation requirements

Turn in an assignment

Announcements ⤴

None currently available.

Welcome Dora Butler!

2011-2012, Regular Current cycle day: Tue

Latest averages, Trimester 1 ⤴

8th ENG - 2, 8th Grade English	89.000
8th MATH - 2, 8th Grade Math	90.000
8th HIS - 2, 8th Grade History	69.000
8th SCI - 1, 8th Grade Science	100.000
8th PE - 1, 8th Grade PE	95.000
8th MUSIC - 1, 8th Grade Music	85.000

See More

Dora's Assignments ⤴

There are no assignments due in the selected date range.

See More

Latest graded student work for this week ⤴

There are no grades available for the selected date range.

See More

Class announcements ⤴

8th SCI - 1, 8th Grade Science
Permission Slip Due: October 5th, 2011
Enjoy a 3.5 hour boat excursion as we venture to Capers Island, one of the few remaining undeveloped barrier islands. We will cruise through winding tidal creeks to find diverse wildlife living in this salt marsh environment.

Dora's Schedule ⤴

10/6/2011, Tue

8th SCI - 1, 8th Grade Science	P2, 8:25 AM - 10:10 AM	MS ROOM 302
8th MATH - 2, 8th Grade Math	P4, 10:15 AM - 11:05 AM	MS ROOM 304
8th ENG - 2, 8th Grade English	P5, 12:05 PM - 12:55 PM	MS ROOM 309
8th HIS - 2, 8th Grade History	P6, 1:00 PM - 1:50 PM	MS ROOM 302

Additional links ⤴

School Home Page:
<http://www.blackbaud.com>



From the explorer bar, you can view important tasks and school announcements.

What's Going On in My Classes?

Dora's classes ▾

- [Class details](#)
- [Assignments list](#)
- [Assignments calendar](#)
- [Attendance](#)

From the Classes menu, select Class details.

1 Select class.

Select the class and marking column to view details about.

2 View details.

View any documents, announcements, and assignments for the class and grades for the marking column.

3 See more.

To view details about an announcement, including any special formatting or embedded videos or images, click **See More**.



View your announcements on the Home page!

Under **Class announcements**, your current announcements appear for each class.

Welcome Dora Butler!	2011-2012, Regular	Current cycle day: Wed												
<p>Latest averages, Trimester 1</p> <table border="1"> <tr><td>8th ENG - 2, 8th Grade English</td><td>89.000</td></tr> <tr><td>8th MATH - 2, 8th Grade Math</td><td>90.000</td></tr> <tr><td>8th HIS - 2, 8th Grade History</td><td>69.000</td></tr> <tr><td>8th SCI - 1, 8th Grade Science</td><td>100.000</td></tr> <tr><td>8th PE - 1, 8th Grade PE</td><td>95.000</td></tr> <tr><td>8th MUSIC - 1, 8th Grade Music</td><td>85.000</td></tr> </table> <p>See More</p> <p>Dora's Assignments</p> <p>There are no assignments due in the selected date range. See More</p> <p>Latest graded student work for this week</p> <p>There are no grades available for the selected date range. See More</p>	8th ENG - 2, 8th Grade English	89.000	8th MATH - 2, 8th Grade Math	90.000	8th HIS - 2, 8th Grade History	69.000	8th SCI - 1, 8th Grade Science	100.000	8th PE - 1, 8th Grade PE	95.000	8th MUSIC - 1, 8th Grade Music	85.000	<p>Class announcements</p> <p>8th PE - 1, 8th Grade PE</p> <p>8th MATH - 2, 8th Grade Math Complete this factors worksheet over the weekend: http://www.mathworksheets4kids.com/factors/write-factors-more-than-100.pdf?</p> <p>8th MATH - 2, 8th Grade Math Don't forget about the field trip on Friday!!!!</p> <p>8th ENG - 2, 8th Grade English Don't forget to research and pick your favorite artist. From this artist's work you'll pick a painting and write an essay on it. Examples: Leonardo da Vinci, Vincent van Gogh, Pablo Picasso, Salvador Dali, Claude Monet, Henri Matisse, Andy Warhol For more information about famous painters, see: http://www.theartwolf.com/articles/most-important-painters.htm?</p> <p>8th SCI - 1, 8th Grade Science Reminder! Your first Earth Science test is on Friday, September 30th!!!</p>	
8th ENG - 2, 8th Grade English	89.000													
8th MATH - 2, 8th Grade Math	90.000													
8th HIS - 2, 8th Grade History	69.000													
8th SCI - 1, 8th Grade Science	100.000													
8th PE - 1, 8th Grade PE	95.000													
8th MUSIC - 1, 8th Grade Music	85.000													

What's Due for Class?

Dora's classes ▾

- Class details
- Assignments list
- Assignments calendar
- Attendance

From the Classes menu, select how to view assignments.

List.

Select which class to view assignments for and whether to view the list by class or date. You can expand a class or date to view its assignments.

Calendar.

Select which class to view assignments for and whether to view assignments by day, week, month, or specific date.

The top screenshot shows the 'Assignments' list view for '8th ENG, 8th Grade English'. It lists three assignments: HW-1 (8/31/2011), HW-2 (9/7/2011), and ESSAY-1 (9/9/2011). The bottom screenshot shows a calendar view for the week of September 12-18, with assignments placed on specific days: HW-3 on Wednesday, September 14, and ESSAY-2 on Friday, September 16.



Turn in your assignments online!

From Assignments List:

The sequence shows: 1. A screenshot of the 'Assignments' list with a 'Submit' button highlighted. 2. A 'Turn in an assignment for:' dialog box with 'Choose file' highlighted. 3. The same dialog box with 'Save' highlighted.

1

For the assignment to turn in, click **Submit**.

2

Click **Choose file** and browse to the file to turn in.

3

Click **Save**.

From Home Page:

The screenshot shows the 'Turn in an assignment' dialog box with the following fields: Class: 8th MATH - 2, Marking Column: Tri 1, Category: Homework. The assignment description is 'HW-5 - Due on 9/9/2011 by 12:00 PM'. The 'Choose file' button is highlighted.

Under View, click Turn in an assignment and then select the assignment, click Choose file, and browse to the file to turn in. To select the assignment, select its class, marking column, and category.

How's My Attendance Record?

Dora's classes ▾

- Class details
- Assignments list
- Assignments calendar
- Attendance

From the Classes menu, select Attendance.

For each day or class, you can view attendance details. Expand a day or class to view all absences and tardies, including any attendance codes that your school sets up.

View ⌵

By Day

By Class

Show ⌵

Academic year: 2011-2012 ▾

Session: Regular ▾

Term: <All Terms> ▾

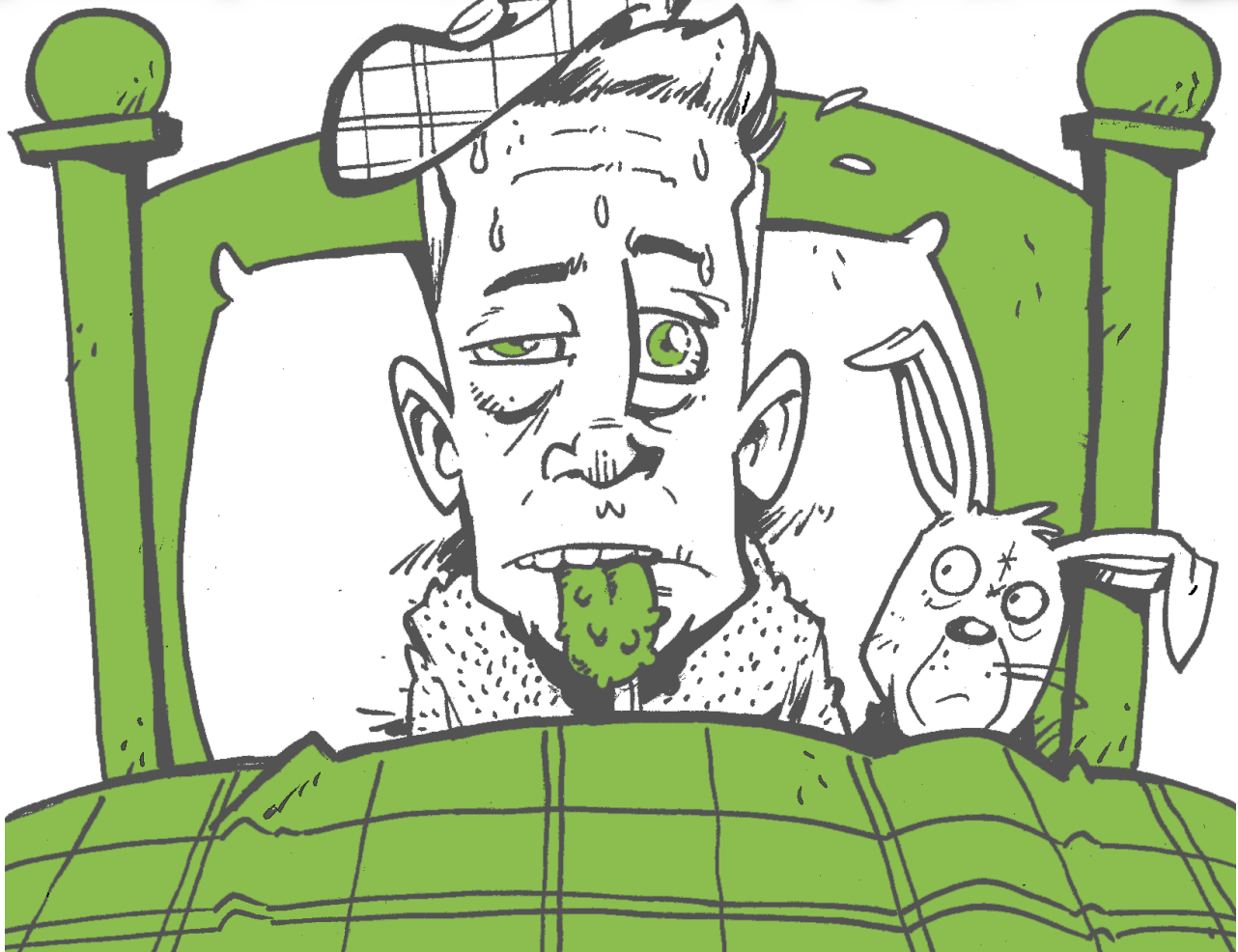
Announcements ⌵

None currently available.

Attendance

Expand all Collapse all

⌵	8th ENG - 2, 8th Grade English	3 absences	2 tardies	
	8/24/2011 Mon P4 10:15 AM - 11:05 AM MS ROOM 309	TARDY - Tardy		with Mr. Bob Wells
	8/31/2011 Mon P4 10:15 AM - 11:05 AM MS ROOM 309	ABSENT - Absent		with Mr. Bob Wells
	9/8/2011 Tue P5 12:05 PM - 12:55 PM MS ROOM 309	ABSENT - Absent		with Mr. Bob Wells
	9/14/2011 Mon P4 10:15 AM - 11:05 AM MS ROOM 309	TARDY - Tardy		with Mr. Bob Wells
	9/30/2011 Wed P3 9:20 AM - 11:05 AM MS ROOM 309	ABSENT - Absent		with Mr. Bob Wells
⌵	8th HIS - 2, 8th Grade History	3 absences	1 tardy	
⌵	8th MATH - 2, 8th Grade Math	3 absences	1 tardy	
⌵	8th PE - 1, 8th Grade PE	2 absences	1 tardy	
⌵	8th SCIENCE - 2, 8th Grade Science	3 absences	1 tardy	



How Are My Grades?

Dora's grades ▾

- Graded student work
- Averages
- Report card
- Transcript
- Graduation requirements

From Grades, select Averages or Graded student work.

Your school sets the available years and marking columns.

If a note appears, click it to see your in-progress graded work for the class.

The marking column displays the official posted grade.

View

Averages

Graded student work

Show

Academic year: 2011-2012

Session: Regular

Marking column: <All>

Announcements

Averages Expand all Collapse all

	Tri 1	Tri 2	Tri 3
8th ENG - 2, 8th Grade English	✓		
8th HIS - 2, 8th Grade History	✓		
8th MATH - 2, 8th Grade Math	✓		
Taught by: Mr. Patrick Gene Hodges Tri 1 Comments: Please contact me to schedule a conference.			
8th MUSIC - 1, 8th Grade Music	✓		

View

Graded student work

Show

Academic year: 2011-2012

Session: Regular

Marking column: Tri 1

Class to display:

- 8th ENG - 2, 8th Grade English
- 8th HIS - 2, 8th Grade History
- 8th MATH - 2, 8th Grade Math
- 8th MUSIC - 1, 8th Grade Music
- 8th PE - 1, 8th Grade PE
- 8th SCI - 1, 8th Grade Science

Check Mark Font

Graded student work Expand all Collapse all

Tri 1 grade: 90.000 Mr. Patrick Gene Hodges

Comments

Please contact me to schedule a conference.

Homework 93.00 A 33% of Tri 1

Homework 1 7/26/2011

homework 3 7/26/2011

HW-5 9/9/2011 Complete the take-home worksheet on factors.

Quiz 87.00 B+ 33% of Tri 1

Quiz 1 7/26/2011 Quiz

Test 90.00 A- 33% of Tri 1

Test 1 7/26/2011 Test 1



View your averages on the Home page!

Under **Latest averages**, your current average for each class appears. To view details about your averages, click **See More**.

<p>Welcome Dora Butler!</p> <p>Latest averages, Trimester 1</p> <table border="1" style="width: 100%; border-collapse: collapse;"> <tbody> <tr><td>8th ENG - 2, 8th Grade English</td><td>89.000</td></tr> <tr><td>8th MATH - 2, 8th Grade Math</td><td>90.000</td></tr> <tr><td>8th HIS - 2, 8th Grade History</td><td>69.000</td></tr> <tr><td>8th SCI - 1, 8th Grade Science</td><td>100.000</td></tr> <tr><td>8th PE - 1, 8th Grade PE</td><td>95.000</td></tr> <tr><td>8th MUSIC - 1, 8th Grade Music</td><td>85.000</td></tr> </tbody> </table> <p style="text-align: right;">See More</p> <p>Dora's Assignments</p>	8th ENG - 2, 8th Grade English	89.000	8th MATH - 2, 8th Grade Math	90.000	8th HIS - 2, 8th Grade History	69.000	8th SCI - 1, 8th Grade Science	100.000	8th PE - 1, 8th Grade PE	95.000	8th MUSIC - 1, 8th Grade Music	85.000	<p>2011-2012, Regular Current cycle day: Mon</p> <p>Dora's Schedule</p> <p>10/19/2011, Mon</p> <table border="1" style="width: 100%; border-collapse: collapse;"> <tbody> <tr> <td>8th MATH - 2, 8th Grade Math</td> <td>P1, 7:30 AM - 9:15 AM</td> <td>MS ROOM 304</td> </tr> <tr> <td>8th HIS - 2, 8th Grade History</td> <td>P3, 9:20 AM - 10:10 AM</td> <td>MS ROOM 302</td> </tr> <tr> <td>8th ENG - 2, 8th Grade English</td> <td>P4, 10:15 AM - 11:05 AM</td> <td>MS ROOM 309</td> </tr> <tr> <td>8th SCI - 1, 8th Grade Science</td> <td>P5, 12:05 PM - 12:55 PM</td> <td>MS ROOM 302</td> </tr> </tbody> </table>	8th MATH - 2, 8th Grade Math	P1, 7:30 AM - 9:15 AM	MS ROOM 304	8th HIS - 2, 8th Grade History	P3, 9:20 AM - 10:10 AM	MS ROOM 302	8th ENG - 2, 8th Grade English	P4, 10:15 AM - 11:05 AM	MS ROOM 309	8th SCI - 1, 8th Grade Science	P5, 12:05 PM - 12:55 PM	MS ROOM 302
8th ENG - 2, 8th Grade English	89.000																								
8th MATH - 2, 8th Grade Math	90.000																								
8th HIS - 2, 8th Grade History	69.000																								
8th SCI - 1, 8th Grade Science	100.000																								
8th PE - 1, 8th Grade PE	95.000																								
8th MUSIC - 1, 8th Grade Music	85.000																								
8th MATH - 2, 8th Grade Math	P1, 7:30 AM - 9:15 AM	MS ROOM 304																							
8th HIS - 2, 8th Grade History	P3, 9:20 AM - 10:10 AM	MS ROOM 302																							
8th ENG - 2, 8th Grade English	P4, 10:15 AM - 11:05 AM	MS ROOM 309																							
8th SCI - 1, 8th Grade Science	P5, 12:05 PM - 12:55 PM	MS ROOM 302																							

What's My Official Progress?

Dora's grades ▾

- Graded student work
- Averages
- Report card**
- Transcript
- Graduation requirements

From the Grades menu, select Report card or Transcript.

When you have a new report card or transcript, **NEW!** appears in red.

Brian Lewis Davis
 Advisor: Mrs. Martha D Rivers Student ID: 0816
 Grade level: Ninth Grade Date entered: 5/26/2013
 Address: 344 Wheeler Drive Graduation:
 Charleston, SC 29407

Pepperworth Upper School
 3460 Creekfield Road
 Charleston, SC 29492
 (843) 555-1234

Report Card

2012-2013											
Course	Class	Teacher	QT 1	QT 2	S1	QT 3	QT 4	S2	FINAL	Credit	Attendance
English I	ENGL I - 1	Mrs. Claire Louise Williams	A	B	A-	A	B+	A	A	1.00	3
Algebra I	ALGB I - 2	Mr. Marcus Gates	A	A	A	A	A	A	A	1.00	3
US History	US HIST - 1	Mrs. Martha D Rivers	A	B	A-	A	A-	A	A	1.00	3
Spanish I	SPAN I - 1	Mrs. Margaret Anne Andrews	A	A	A	A+	A-	A	A	1.00	3
Ceramics I	CERAMI - 1	Mrs. Alice M Appleby	B+	A	A	B	B+	A	A	1.00	3
Intro to Computers	COMP INTRO - 1	Mr. Marcus Gates	A-	A-	A	B+	A	A	A	1.00	3

Grading Scale

A+ 97-100 B+ 87-89 C+ 77-79 D 65-69
 A 94-96 B 84-86 C 74-76 F 0-64
 A- 90-93 B- 80-83 C- 70-73

Signature:

Michael Richard Andrews
 Class of: 2013
 SSN: 222-22-2222
 Parent/Guardian: Mr. Alex Edward Andrews
 Address: 355 Glen Brook Lane
 Charleston, SC 29401

Pepperworth Upper School
 3460 Creekfield Road
 Charleston, SC 29492
 (843) 555-1234

Official Transcript

2009-2010, Ninth Grade			2010-2011, Tenth Grade			2011-2012, Eleventh Grade			2012-2013, Twelfth Grade		
Course	Final	Credit	Course	Final	Credit	Course	Final	Credit	Course	Final	Credit
English I	A	1	English II		1	English III	D+	1	English IV	B+	1
Algebra I	A-	1	Biology	B	1	Chemistry	B-	1	Trigonometry	A-	1
Intro to Computers	A+	1	Biology Lab		1	US History		1	Chemistry Honors	A	1
Physical Education I	A+	1	Geometry		1	Algebra II	B	1	Economics	B+	1
Physical Science	A-	1	World History		1	Ceramics I	B	1	American Government	A	1
	Total Credits:	5	Drawing I	A+	1	Spanish II	C+	1	US History	B	1
	Cumulative Credits:	5	Programming		1	Chemistry Lab	B	1			
	Cumulative GPA	4.00		Total Credits:	7		Total Credits:	7		Total Credits:	5
	Unweighted	5.00		Cumulative Credits:	12		Cumulative Credits:	19		Cumulative Credits:	24
	Weighted			Cumulative GPA	2.70		Cumulative GPA	2.30		Cumulative GPA	4.70
				Unweighted	5.00		Unweighted	4.30		Weighted	
				Weighted			Weighted				

Activities			Test Scores		
Category	Activity	Grade	Test	Subject	Score
Clubs	Ecology Club	10, 11	PSAT	Math	72
Clubs			PSAT	Verbal	68
Clubs					
Athletics	Soccer				
Athletics					
Athletics					
Athletics					
Volunteer/Community Service	SPCA	11			
Volunteer/Community Service					
Volunteer/Community Service					
Volunteer/Community Service					

Transcript.
 Your comprehensive performance over several academic years.

 To view report cards and transcripts in your browser, enable pop-ups.

What's Left to Do Before I Graduate?

Dora's grades ▾

- Graded student work
- Averages
- Report card
- Transcript
- Graduation requirements

From the Graduation menu, select Graduation requirements.

Graduation Requirements Detail

View: College Preparatory CPD 29.63% Requirements Completed Total credits taken: 8.0000

Total credits towards Diploma: 8.0000

College Preparatory Total Credits: 8.0000

English Requirements

- Core English Requirements - 3.0000 credits required
- ENGL I - English I 1.0000 (2009-2010 - Regular)
- In Progress: ENGL II - English II for 1 credit (2010-2011 - Regular)
- Need 1.0000 credit of: ENGL III - English III

- Elective English Requirements - 1.0000 credit required
- Need 1.0000 credit of: ENGL IV - English IV

Mathematics Requirements

- Core Mathematics Requirements - 3.0000
- ALGB I - Algebra I 1.0000 (2009-2010 - Regular)
- Need 2.0000 credits of: GEOM - Geometry
- Elective Mathematics Requirements - 1.0000
- In Progress: ALGB II - Algebra II for 1 credit

Science Requirements

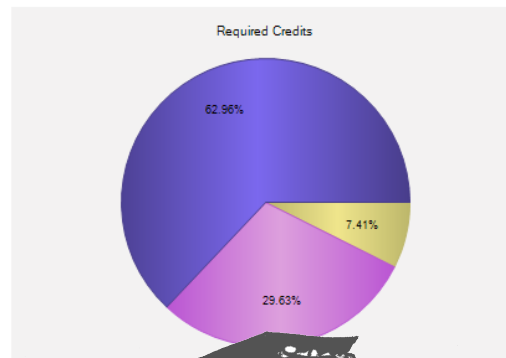
- Core Science Requirements - 3.0000 credits required
- SCI - Physical Science 1.0000 (2009-2010 - Regular)
- Need 2.0000 credits of: BIO - Biology, BIO AP - AP Biology
- Elective Science Requirements - 1.0000 credit required
- Need 1.0000 credit of: CHEM H - Chemistry, PHYS - Physics, BIO AP - AP Biology, PHYS L - Physics Lab

Detail.

View detail information about the classes required for graduation and your current credits.

Graduation Requirements Summary

View: College Preparatory CPD Valid for all dates



Minimum credits needed: **27.00**
 Total earned: **8.00** Remaining needed: **19.00**

Class Of: **2013**
 Current Advisor: **Mrs. Martha D Rivers**
 Grade Level Advisor: **Mrs. Samantha Jessica Gibson**, **Mr. Simon Alberts**

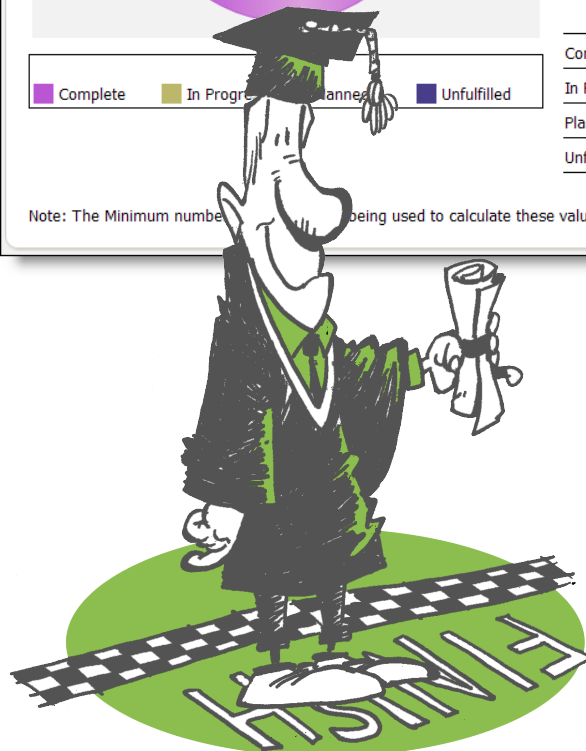
Graduation Date:

	# of Credits
Complete	8.00
In Progress	2.00
Planned	0.00
Unfulfilled	17.00

Note: The Minimum number of credits being used to calculate these values.

Summary.

View a summary of your progress toward graduation and information about your advisors and credits.



How Do I Look Up Course Information?

Registration ▾

Course catalog

Enroll in classes

Dora's schedule

From the Registration menu, select Course catalog.

1 Filter.

Select the criteria of the courses to show.

2 Click.

Click the first letter of the course to view.

3 View.

Select a course to view its details.

The screenshot shows a 'Course Catalog' interface. On the left is a 'Show' sidebar with filters: School (Middle), Academic year (2011-2012), Session (Regular), Term (Fall), Department (<All>), Grade level (<All>), and Select by (Course ID). The main area displays a list of courses with columns for course name, schedule, and room. The first course is 'COMPUTER - 1, COMPUTER, Intro to Computers' with a schedule of 'Mon, Tue, Wed, Thu, Fri, 9:20 AM-10:10 AM, 1:00 PM-1:50 PM, 8:25 AM-9:15 AM, Mr. Timothy Clarke' and room 'US ROOM 204'. The second course is 'COMPUTER - 2, COMPUTER, Intro to Computers' with a schedule of 'Mon, Tue, Wed, Thu, Fri, 10:15 AM-11:05 AM, 12:05 PM-12:55 PM, 9:20 AM- Mr. Timothy Clarke' and room 'US ROOM 204'. Below the list, details for 'COMPUTER - 1, COMPUTER, Intro to Computers' are shown: Length in terms: 3, Start term(s): Fall, Class status: OK, Gender: Coed, Course type: Pre-requisites: None, Grade levels: 06,07,08.

Your school sets up the information that appears in the course catalog, such as the course descriptions, grade levels, prerequisites, the number of classes, and more!



How Do I Register for Classes?

Registration ▾

Course catalog

Enroll in classes

Enter requests

Dora's schedule

From Registration, select Enroll in classes or Enter requests.

Depending on your school's settings, you enroll in classes or request classes.

Enroll.

Schedule for 2011-2012, Regular Session

Edit Registration

Enrolled Classes:

Course	Class
8th ENG - 8th Grade English	
8th HIS - 8th Grade History	
8th MATH - 8th Grade Math	
8th MUSIC - 8th Grade Music	
8th PE - 8th Grade PE	
8th SCI - 8th Grade Science	

Schedule for 2011-2012, Regular Session

Advisor:
Grade Level Advisor: Mr. Simon Alberts

1. All Courses:
8th ENG - 8th Grade English | 2 - Mon:10:15AM - Mr. Bob Wells
Credits: 0.0000

2. Additional classes:

Course	Class
8th HIS - 8th Grade History	2 - Mon:9:20AM - Stephanie Ann I
8th MATH - 8th Grade Math	2 - Mon:7:30AM - Mr. Patrick Gen
8th MUSIC - 8th Grade Music	1 - Thu:1:55PM - Mr. Mark Newtor
8th PE - 8th Grade PE	1 - Mon:1:55PM - Mr. Martin Edwa
8th SCI - 8th Grade Science	1 - Mon:12:05PM - Stephanie Ann

Potential Schedule | **Calculate Conflicts** | **Submit**

Please refrain from clicking the Back, Forward, and Refresh buttons while submitting to ensure the information submits correctly.

Search for Course - Windows Internet Explorer

Course Search

Course ID: Grade level:

Course name: Course type:

Department: School:

Search | **Cancel**

1

2

3

4

Request.

Registration for 2011-2012, Regular Session

Edit Requests

Main Request

8th ENG - 8th Grade Eng	
8th HIS - 8th Grade Hist	
8th MATH - 8th Grade M	
8th MUSIC - 8th Grade I	
8th PE - 8th Grade PE	
8th SCI - 8th Grade Sci	

Registration for 2011-2012, Regular Session

Advisor:
Grade Level Advisor: Mr. Simon Alberts

1. All Courses:
8th ENG - 8th Grade English
Length in terms: 3 Credits: 0.0000

2. Additional requests:

Main Request	Length in Terms	Credits	Exceptions
8th HIS - 8th Grade History	3	0.0000	
8th MATH - 8th Grade Math	3	0.0000	
8th MUSIC - 8th Grade Music	3	0.0000	
8th PE - 8th Grade PE	3	0.0000	
8th SCI - 8th Grade Science	3	0.0000	

Submit

Please refrain from using the Back, Forward, and Refresh buttons while submitting to e

Search for Course - Windows Internet Explorer

Course Search

Course ID: Grade level:

Course name: Course type:

Department: School:

Search | **Cancel**

1 Edit.

Click **Edit Requests** or **Edit Registration**.

2 Add new.

Click **New** and search for the class to register for.

3 Verify.

If you enroll, view the **Potential Schedule** and **Calculate Conflicts**.

4 Submit.

Click **Submit** to send your enrollment or requests.

What's My Class Schedule?

Registration ▾

- Course catalog
- Enroll in classes
- Dora's schedule

From the Registration menu, select your schedule.

List.

Expand a class to see its schedule. You can filter classes by year, session, and term.

Grid.

Filter classes by school, year, session, term, and time interval.

Calendar.

Display classes by day, week, month, or specific date.

To see the description of a class, click its name to view the course catalog.
To view a teacher's contact info, click the teacher's name.



Display your schedule on the Home page!

- 1** From the **My settings** menu, select **Customize home**.
- 2** Select **Show class schedule for** and the date range of the classes to display.
- 3** Click **Save**.

How Much Do I Owe for Tuition and Fees?

Billing

To view your billing statement, click Billing on the menu bar.

Billing statement.

Your charges and previous payment activity.



To view billing statements in your browser, enable pop-ups.

Community Services Inc. 3 Broad Street Charleston, SC 29403		STATEMENT Statement date: 9/30/2013 11092315265500002			
Mr. Carl Davis 344 Wheeler Drive Charleston, SC 29407		Charges For Marshall Davis Record ID: 0166 Student Grade:			
		Amount Due: \$12,550.00 Amount Enclosed:			
Please detach and return this portion with your remittance.					
Date	Type	Reference	Amount	Balance	
		<u>Marshall Davis</u>			
9/1/2013	Charge	Summary balance as of 8/29/2013	\$10,950.00	\$10,950.00	
		Tuition - Ten Pymmen	\$1,600.00	\$12,550.00	
		Subtotal - Marshall Davis	\$12,550.00		
		<u>Statement Summary</u>			
		Charges	\$1,600.00	\$1,600.00	
0-30 Days: \$3,200.00		31-60 Days: \$0.00		61-90 Days: \$9,350.00	
Over 90 Days: \$0.00		Total: \$12,550.00			



How's My Conduct?

Conduct

To view your conduct infractions, click **Conduct** on the menu bar.

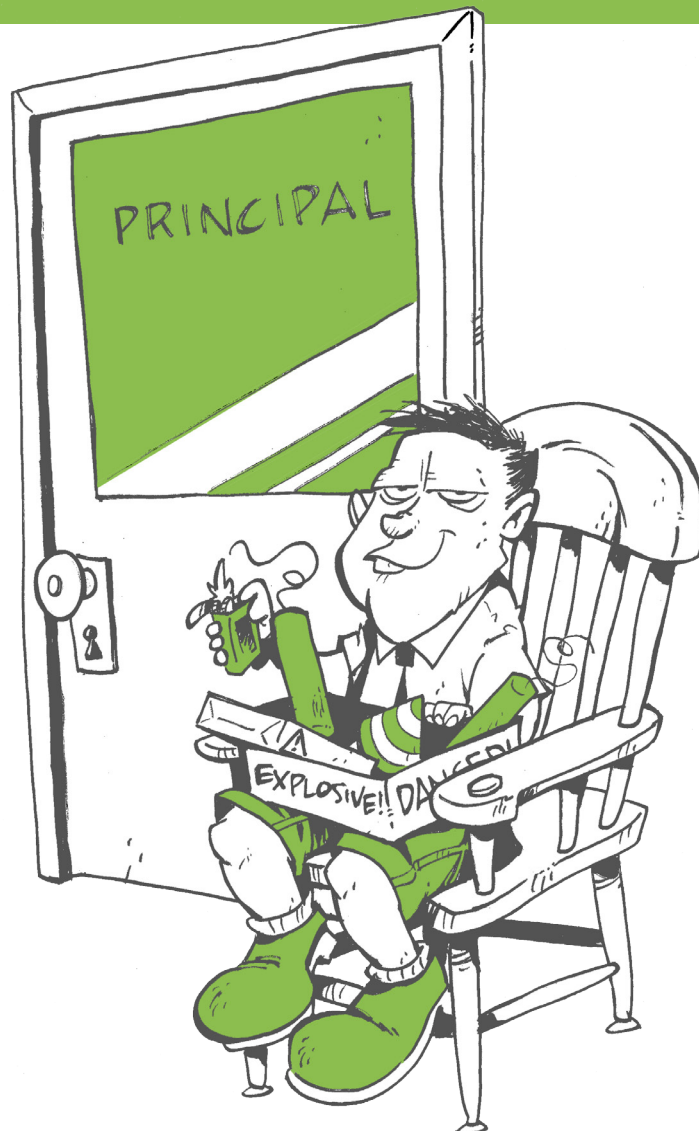
Conduct

Expand all

Collapse all

Date	Infraction	Reported By	Location	Total Units
9/14/2011	Class disruption	Mr. Bob Wells		0
9/16/2011	Talking back to teacher	Mr. Patrick Gene Hodges		1
Detention	9/19/2011 12:00 PM - 1:00 PM	Pending	Mr. Patrick Gene Hodges	1.00

If you can't keep out of trouble, for each infraction, you can view its date, location, and reporting faculty. You can also view details about the consequence for each infraction, such as its date and time, status, location, faculty, and unit (if used by your school).



How Can I Set Up NetClassroom?

My settings ▾

- Customize home
- Change address
- Change password
- Security questions
- FAQ

Use the My settings menu to personalize NetClassroom.

Customize home.

Set up your Home page and school calendar.

Customize

Home page

Show averages using: **Trimester 1** Show My Announcements

Show graded student work
Show work graded as of: **This Week** Show class schedule for: **Today**

Show assignments due in the next **2** days

Calendar page

Show the following events

<input type="checkbox"/> Classes	<input checked="" type="checkbox"/> Actions for Me
<input checked="" type="checkbox"/> Assignments	<input type="checkbox"/> No Event Category
<input type="checkbox"/> Cycle Days	<input checked="" type="checkbox"/> Holidays
<input checked="" type="checkbox"/> Actions Assigned to Me	<input checked="" type="checkbox"/> Vacation

Change address or password.

Depending on your school's setting, update your primary address information or login password.

Change Primary Address

Our records indicate the following as your primary address.

Country: **United States**

Address: **1883 Wannamaker Avenue**

City: **Charleston**

State: **SC**

29407

Charleston

Southeast

Change Password

This form will allow you to update your Password. You should not disclose your Password to others. Passwords may not be longer than 20 characters.

Old Password:

New Password:

Verify Password:

Security Questions

To reset your password, the program requires three questions to verify your identity. Please select the questions and limit your answers to 50 characters.

Question 1: **On what street did you grow up?**

Answer: **college**

Question 2: **In what city were you born?**

Answer: **lansing**

Question 3: **What is your mother's maiden name?**

Answer: **pratt**

Security questions.

Update the questions required to reset your password.

Frequently Asked Questions

- Where can I see assignment grades?
- On the Assignments page, I cannot view all of the assignment details. How can I view all of the details?
- How do I contact a teacher from Pepperworth School?
- How do I change my Pepperworth School password?
- How do I view report cards, transcripts, and statements?
- How do I install the check mark font used to display assignment grades, report cards and transcripts?

Where can I see assignment grades?

You can view assignment grades on the Daily Grades page. You can open the Daily Grades page two ways.

1. On the Grades page, click the check mark picture link in the cell for the marking column and class.
2. On the Assignments page, click the check mark picture link to the left of a class name.

On the Assignments page, I cannot view all of the assignment details. How can I view all of the details?

If you cannot see all of the details for an assignment (including class ID, course name, category, assignment name, and description) when viewing assignments by week or month, select to view assignments by day instead.

FAQ.

Find answers to frequently asked questions.