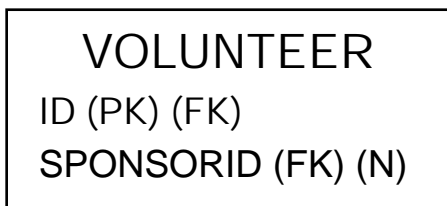


VOLUNTEER



CONSTITUENT

ID (PK)

TITLECODEID (FK) (N)

TITLE2CODEID (FK) (N)

SUFFIXCODEID (FK) (N)

SUFFIX2CODEID (FK) (N)

MARITALSTATUSCODEID (FK) (N)

LEGEND

Italics

(FK)

(N)

_____▶

- - - - -

= Primary Key Field

= Foreign Key Field

= Nullable Field

= One to One

= One to Many

= Optional Data